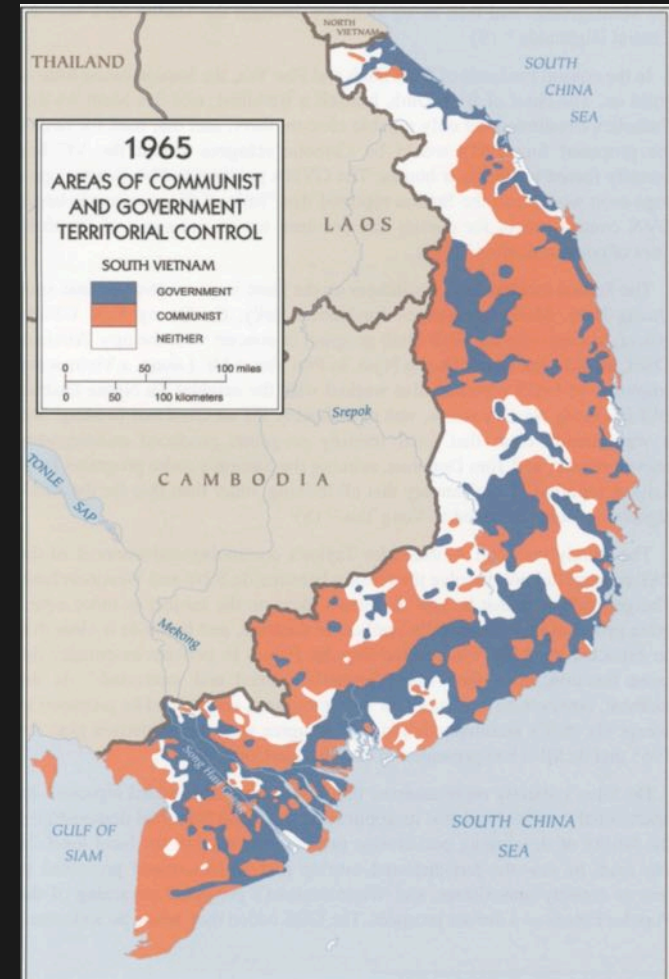


Databasing Jungle-War

How did culture, social practice and materiality of data-processing affect its results and usage during the Vietnam war?

Historical Background

- Advisory Mission 1961-1964 failed
- 1965: US openly enter civil war in Vietnam
- Creation of Office for Civil Operations and Revolutionary Development Support (CORDS) in 1967
- Secretary of Defense Robert S. McNamara orders thorough investigation and application of System Analysis principles



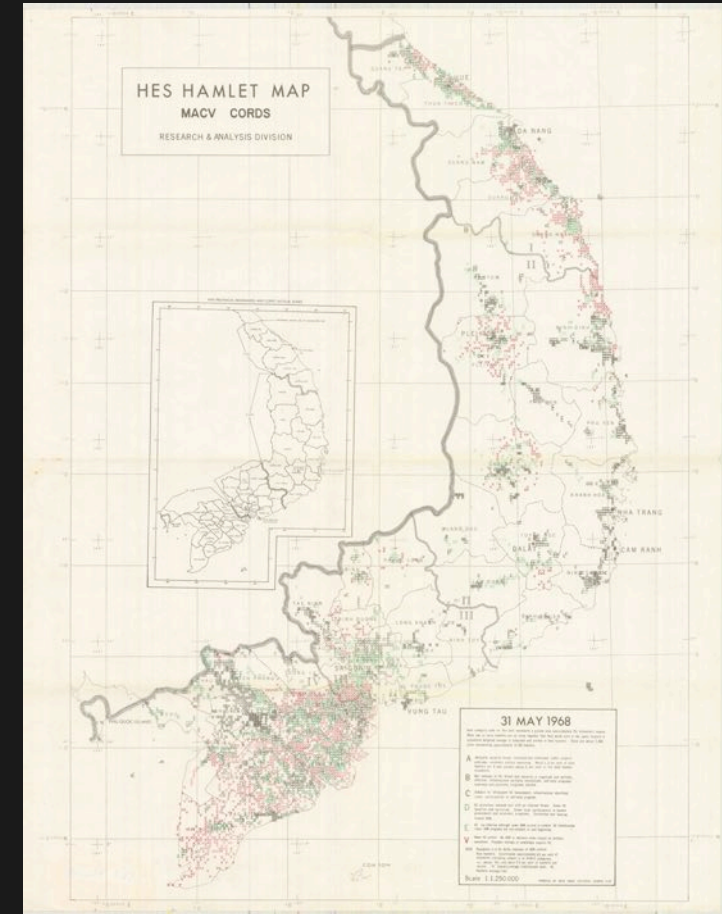
Pacification Database

- 67 different data-collections on various aspects of intelligence, security and development
 - interconnectable via a hamlet gazetteer containing USID identifiers and geolocation:
- Hamlet Evaluation System (HES)

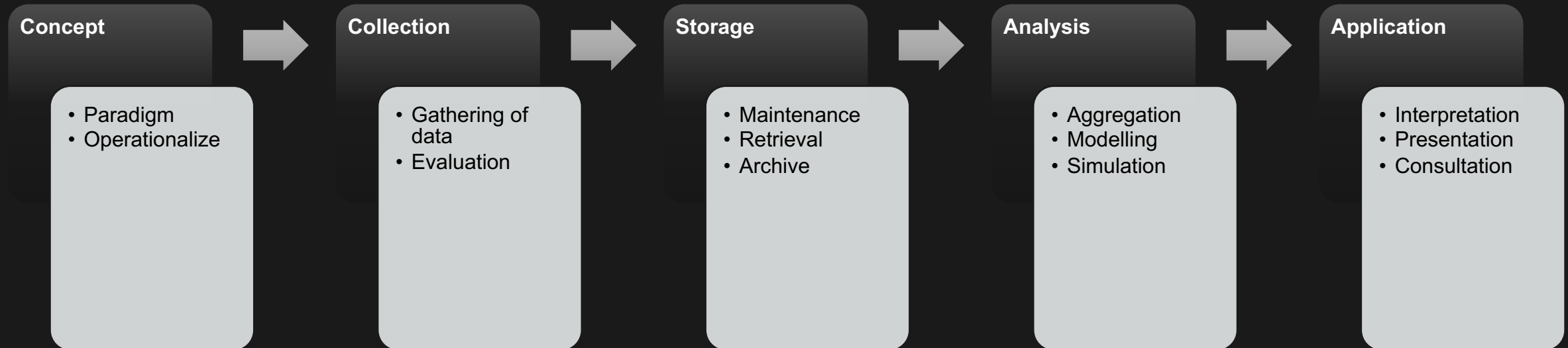


Hamlet Evaluation System (HES)

- 44 provinces, 272 districts, 2.680 villages, 11.800 hamlets, 11-17 mio. people
- geoinformation and demographic data updated quarterly
- matrix of 18 indicators and 5 rating-categories (A-E), updated monthly
- operational since January 1967, revised in 1970 and 1972



« Databasing »



Scheme inspired by: Peter Graeff and Nina Baur, «Digital Data, Administrative Data, and Survey Compared»

Hamlet Worksheet

DISTRICT _____ VILLAGE _____ HAMLET NAME _____ HAMLET NO. _____ TYPE OF HAMLET _____					
UNCONTROLLED <input type="checkbox"/> UNDERGOING CLEARING <input type="checkbox"/> UNDERGOING SECURING <input type="checkbox"/> NOT USED <input type="checkbox"/> RPA <input type="checkbox"/>					
CONFIDENCE ESTIMATE <input type="checkbox"/> 1 <input type="checkbox"/> 2 <input type="checkbox"/> 3 <input type="checkbox"/> 4 <input type="checkbox"/> 5 <input type="checkbox"/> 6 <input type="checkbox"/>					
	E	D	C	B	A
1. Military Activities a. Village Security Unit	VII G control effective in some individual or eliminated VC VII weapons targets in area.	VII G control somewhat in area & deliberate not attack in place through from within village or nearby area (10-15 km).	Military control of VII G control, most G control identified, 10% known, some as weapons, activity being place level, can harass but not prevent GVN.	VII G control reduced to 1-3 hamlets on VII periphery; could make desperate road. As activity of G from across VII limited by no known or friendly defense.	VII G control almost none. No threat of harassment or penetration from G. In edge of VII.
b. Internal Forces (IF) (Prov, Main Force, unit in district)	IF units may have base & can make company-sized attacks within 15 km of hamlet. Hamlet or VII may have been fired on and/or attacked during month.	Unit in district reduced up to 15%; IF otherwise in E.	Unit in district reduced up to 15% in some & areas, or by hamlet destroyed. No VC are active in area or larger, no mortar or III use or in hamlet during month.	Unit in district or near hamlet destroyed, well in district only marginally effective. Not capable of company-size operations.	Unit in district eliminated or ineffective; no attacks by platoon or larger & no mortar or RF fire in district or near hamlet. Attack possible only from outside district.
c. Military Facilities d. Military Hamlet	Recent VC visit to hamlet at night, sometimes in day. Little GVN activity at night. Review to hamlet interrupted by day; may be attacked near hamlet.	GVN activity under harassment. Frequent raiding on routes to hamlet; VC night activity in hamlet.	Long range fire at night; VC activity in adjacent hamlets in VII. Occasional raiding on routes to hamlet.	No facilities in hamlet during month; frequent harassment within village or nearby.	No facilities, including harassment, in VII or near hamlet or on routes to VII during month.
e. VC Political & Subversive Activities f. Hamlet Infrastructure	Party cadre underground by day but free to be visible in public at night. No assurance party structure or leaders uncovered.	Numbers and most leaders of VC hamlet organization uncovered & neutralized but underground agents still operative.	Party cadre most of Party apparatus identified; some agents under VII or that control still operative.	All neutral Party apparatus identified & dealt with; agents under VII or that control eliminated.	No reason to doubt whole Party apparatus eliminated or neutralized.
g. Village Infrastructure	Despite some individual identification, VII apparatus intact, functioning.	Some VII cadre eliminated but apparatus fairly effective.	Most key members of VII apparatus identified, up to half neutralized; effectiveness curtailed.	Most of VII apparatus leaders eliminated; almost all members identified. Little coordinated VC activity in VII.	VII organization wiped out. Few covert agents directed from outside but signed by friendly security organizations.
h. Activities Affecting Hamlet	VC apparatus can undermine GVN in hamlet by incidents ranging from propaganda distribution & sabotage, at least at night.	No overt propaganda but terrorism or sabotage during past month.	No overt VC incidents in hamlet, few signs of covert subversion.	No subversion in hamlet & no incidents in adjacent hamlets during month.	No subversive activity in VII during month.
i. Security (Security Case) j. Hamlet Defense Plan & Organization	No night defense except by external forces although required.	Day & night defense by external forces. Local recruiting & training underway.	Local warning & communication systems operative; some armed local defense but main reliance on RD cadre or external defense.	Defense force organized; adequate plan and communications for its use.	Adequate defense force & adequate defense plan following Prov RD plan.
k. Friendly External Force (FEP) Assistance	FEP do not meet needs for air, air support, reaction ground force, etc.	FEP meets needs but only effective marginally. e.g., delayed response, no night response, not aggressive, etc.	Availability and effectiveness of FEP generally meet needs.	Need for FEP less than C; can be met adequately.	Need for FEP very slight; can be met adequately.
l. Internal Security Activities	No agents, no intelligence from public except possibly sporadic police informants.	No complete intelligence system; a few trained or voluntary informants & some data from PD census grievance work.	Hamlet chief gets useful info from informants, census grievance & for some volunteers.	Effective informant system; considerable useful info from public.	Hamlet Chief directs effective internal security apparatus; security deputy, police, informant system, willing public participation.
m. Administrative & Political Activities n. GVN Governmental Management	Temporary or external GVN officials; effective, marginally, usually present only in daytime.	Some local participation in hamlet management; officials present usually only in daytime.	Managerial groups problems mostly local; organized or elected, usually present at night.	Complete managerial group is fully resident; includes elected hamlet chief & deputy; fully functioning but with some external support.	Elected, autonomous governing body, under autonomous VII; all officials in hamlet & VII resident.
o. Census Grievance Program	Only limited census activity; no grievance program.	Census grievance program started sporadically.	Initial census grievance survey complete; some individual grievances being resolved.	More GVN actions being taken to meet people's grievances & aspirations.	Permanent GVN grievance representative in place. Substantial evidence of GVN efforts to meet aspirations.
p. Information/PSYOP Activities	Little or none.	Minimal activity; public indifference.	Irregular and frequent activity even if marginally public impact evident; river associations being developed.	Systematic coverage; increased awareness of GVN programs & personnel. Increased numbers of rallies; people participating freely in civic associations.	Reasonable official covering imaginative & regular program active public awareness of GVN personnel, impending elections, district programs, etc.; civic associations active and effective.
q. Health, Education & Welfare r. Medical Services & Sanitation	Only infrequent visits by MEDCAP or cadre team.	Only periodic, scheduled MEDCAP or cadre team visits.	Full-time coverage by external teams; include sanitation instructions.	Resident trained medic who supervises sanitation & public health programs with some public participation. Trained midwife in hamlet or nearby.	Resident trained medic continues effective medical & sanitation programs with general public participation. Adequacy of medicine regular & adequate.
s. Education	No GVN-sponsored educational facilities may be informal instruction by VII cadre, monks, Catholic priests.	Some formal instruction, not full-time; no permanent classrooms.	Formal, full-time public primary education program in permanent classrooms but overcrowded or at least 25% of children not enrolled.	Virtually all children receive primary education in permanent classrooms; may be some adult classes.	All children receive primary education in permanent classrooms; secondary school accessible; adult education program.
t. Welfare	No social welfare activity.	Some welfare activity to assist poor families, but basic needs not determined.	Basic needs determined, some being met.	Basic needs being met; some special benefits being paid by GVN.	Basic needs satisfied; special benefits clarified & being paid. Benefit channels continue to function.
u. Economic Development v. Self Help Activity	None.	People assist in selecting projects but outsiders do most of work.	Projects from RD plan chosen with local concern & some participation in those started.	All programmed projects underway, chosen to satisfy aspirations; popular participation with outside aid.	Some projects completed; local pride generally convincing external interest and support for new projects.
w. Public Works (require outside expertise; often at least village)	None planned or undertaken.	Some delayed planning for RD plan projects.	Planned projects suitable & meet public needs; some work started.	Priority projects underway; resources at hand; people appreciative.	Projects well along or completed; public enthusiastic.
x. Economic Improvement Programs (Farming, Fishing, Land Reform, etc.)	None.	Some planning; a few basic programs started.	These programs underway; people interested.	More advanced programs started; increased popular support and participation.	Most programs well advanced in response to popular demand and continuing participation.

From Punchcard to Tape

[illegible]

RECORD LAYOUT FORM														
HAMLET EVALUATION SYSTEM														
HHS ANALYSIS FILE														
RECORD NAMES										EFFECTIVE DATE: 01 / 01 / 71				
										SHEET 1 OF 1 SHEETS				
USID		DATE	BLANK	POPULATION					S H H	HAMLET FLAGS	VILLAGE FLAGS	ADMIN USID	UTM	BLANK
YY	MM		TOTAL HAMLET	TOTAL VILLAGE	TOTAL HAMLET	TOTAL VILLAGE	NON- HAMLET							
HAMLET NAME		VILLAGE NAME			DISTRICT NAME			PROVINCE NAME			BLANK			
HAMLET MODEL RATINGS					VILLAGE ONLY MODEL RATINGS					VILLAGE MODEL RATINGS				
QUESTION RESPONSES														
QUESTION RESPONSES													BLANK	

Storing



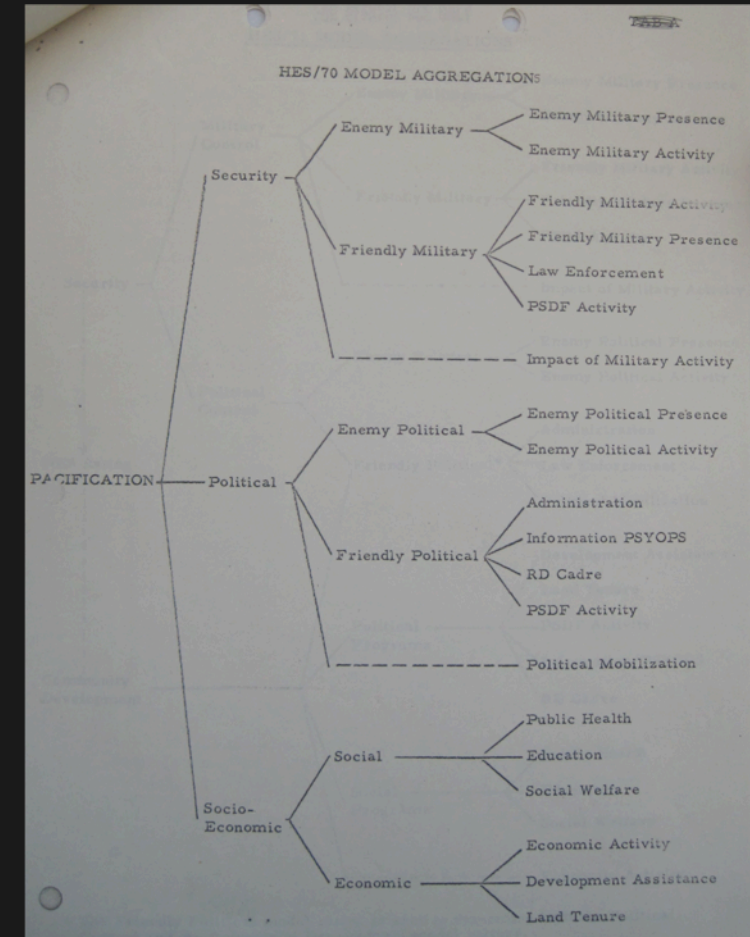
Aggregation

THREE WAY DECISION TABLE

A A A A	B A A A	C A A B	D A A C	E A A D	N A A C
A A B A	B A B B	C A B B	D A B C	E A B D	N A B C
A A C A	B A C B	C A C C	D A C C	E A C D	N A C C
A A D B	B A D B	C A D C	D A D D	E A D D	N A D D
A A E B	B A E B	C A E C	D A E D	E A E E	N A E D
A A N B	B A N B	C A N C	D A N D	E A N D	N A N N
A B A A	B B A B	C B A B	D B A C	E B A D	N B A C
A B B B	B B B B	C B B B	D B B C	E B B D	N B B C
A B C B	B B C B	C B C C	D B C C	E B C D	N B C D
A B D B	B B D B	C B D C	D B D D	E B D D	N B D D
A B E B	B B E C	C B E C	D B E D	E B E E	N B E D
A B N B	B B N C	C B N C	D B N D	E B N E	N B N N
A C A B	B C A B	C C A C	D C A C	E C A D	N C A C
A C B B	B C B B	C C B C	D C B D	E C B D	N C B D
A C C B	B C C C	C C C C	D C C D	E C C D	N C C D
A C D C	B C D C	C C D C	D C D D	E C D E	N C D D
A C E C	B C E C	C C E C	D C E D	E C E E	N C E D
A C N C	B C N C	C C N C	D C N D	E C N E	N C N N
A D A B	B D A B	C D A C	D D A D	E E A D	N D A D
A D B B	B D B C	C D B C	D D B D	E E B E	N D B D
A D C C	B D C C	C D C C	D D C D	E D C E	N D C D
A D D C	B D D C	C D D D	D D D D	E D D E	N D D D
A D E C	B D E C	C D E D	D D E D	E D E E	N D E E
A D N C	B D N C	C D N D	D D N D	E D N E	N D N N
A E A B	B E A C	C E A C	D E A D	E E A E	N E A D
A E B C	B E B C	C E B C	D E B D	E E B E	N E B D
A E C C	B E C C	C E C D	D E C D	E E C E	N E C E
A E D C	B E D D	C E D D	D E D D	E E D E	N E D E
A E E D	B E E D	C E E D	D E E E	E E E E	N E E E
A E N D	B E N D	C E N D	D E N E	E E N E	N E N N
A N A B	B N A C	C N A C	D N A D	E N A D	N N A N
A N B C	B N B C	C N B C	D N B D	E N B E	N N B N
A N C C	B N C C	C N C D	D N C D	E N C E	N N C N
A N D C	B N D D	C N D D	D N D D	E N D E	N N D N
A N E D	B N E D	C N E D	D N E E	E N E E	N N E N
A N N N	B N N N	C N N N	D N N N	E N N N	N N N N

A

N = Not Evaluated



Application

CONFIDENTIAL / MIN

RT118P400.0
21 MAR 73

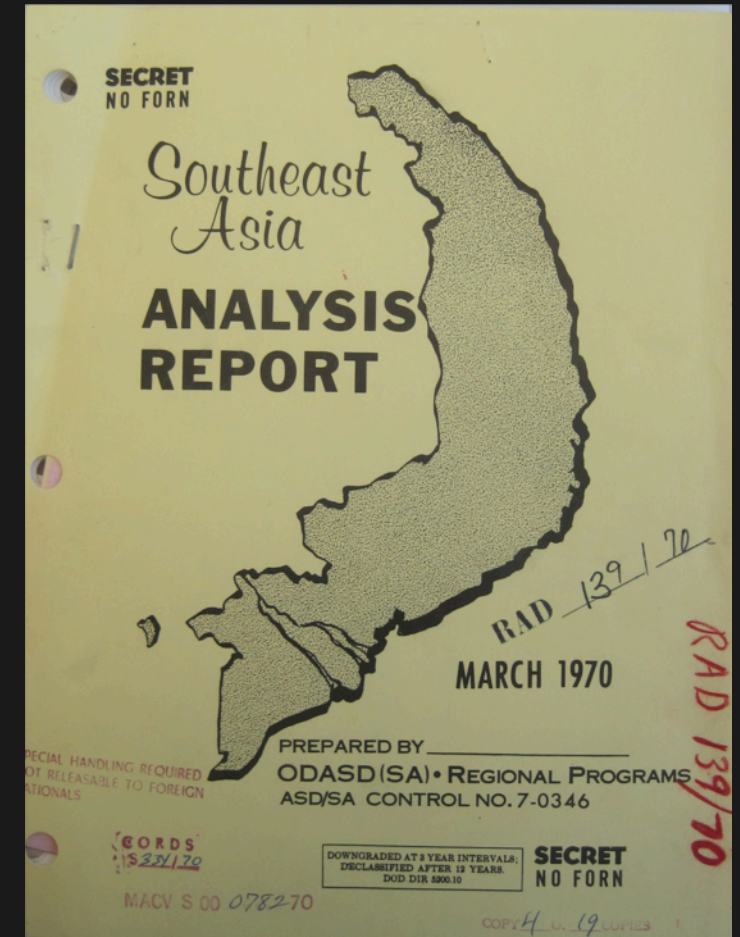
204 - KONTUR
01 - KONTUR

INFORMATION REPORT / BÁO CÁO TIN TỨC
28 FEB 73 / 28 HAI 73

PAGE / TRANG 430

SO NHAN DANH	TEN AP	TCA CC	CAN-SC	TINH-CHAY XA/PP	INDICATORS	CHI FIEU CHINH	MAJOR MODELS	QUAN-QU	MILITARY	CHIN-TRI	POLITICAL	CONG DONG PHAT-THIEN	COMM DEVELOPMENT
USIG	HARLET NAME	UTM	POPULATION	123456789									
VILL/XA 03 PHUONG GUY 101	NON-HAM POP/CAN NGCAI AP		0	99999999									
VILL/XA 04 TAN CIEH 101	NON-HAM POP/CAN NGCAI AP		0	99999999									
VILL/XA 05 DO LAI	NON-HAM POP/CAN NGCAI AP		1	99992999									
VILL/XA 06 NGU TRANG	NON-HAM POP/CAN NGCAI AP		1	99992999									
VILL/XA 07 NGU THANH	NON-HAM POP/CAN NGCAI AP		1	99992999									
0701 NGU THANH			1	99992999									
	2A129918												
VILL/XA 08 TRUNG NGHIA	NON-HAM POP/CAN NGCAI AP		1	99990999									
0801 TRUNG NGHIA			1	99990999									
0802 PLEI KEOAY 101			1	99990999									
0803 PLEI TRUNG NGU			1	99990999									
	2A124917												
VILL/XA 09 TAN THANH	NON-HAM POP/CAN NGCAI AP		1	99992999									
VILL/XA 10 TRI CAC	NON-HAM POP/CAN NGCAI AP		2	99990999									

CONFIDENTIAL / MIN



Selected Literature and Sources

- US National Archives and Records Administration: Department of Defense. Pacific Command. U.S. Military Assistance Command Vietnam. Office of Civil Operations and Rural Development Support. Textual and Electronic Records.
- Peter Graeff and Nina Baur, "Digital Data, Administrative Data, and Survey Compared," *Historical Social Research / Historische Sozialforschung*, Vol. 45, No. 3 (2020), pp. 244-269.
- Paul Dourish, *The Stuff of Bits: An Essay on the Materialities of Information* (Cambridge, Massachusetts: The MIT Press, 2017).
- Thomas Haigh, "How Data Got Its Base: Information Storage Software in the 1950s and 1960s," *IEEE Annals of the History of Computing* 31,4 (2009), 6–25.
- Rob Kitchin, *The Data Revolution: Big Data, Open Data, Data Infrastructures & Their Consequences* (Los Angeles, California: SAGE Publications, 2014).
- Nathan Ensmenger, *The Computer Boys Take over: Computers, Programmers, and the Politics of Technical Expertise* (Cambridge, Mass.: MIT Press, 2010).
- Matthew G. Kirschenbaum, *Mechanisms: New Media and the Forensic Imagination*, (Cambridge, Mass: MIT Press, 2012).
- Jill Lepore, *IF THEN: How the Simulmatics Corporation Invented the Future* (New York: Liveright, 2020).
- Mark C Marino, *Critical Code Studies: Initial Methods* (Cambridge, Massachusetts: The MIT Press, 2020).
- Joy Rohde, "The Last Stand of the Psychocultural Cold Warriors: Military Contract Research in Vietnam," *Journal of the History of the Behavioral Sciences* 47,3 (2011), 232–50.

Thank You!

moritz.feichtinger@unil.ch